



**WELCOME TO THE 12<sup>th</sup> NECLIME WORKSHOP**

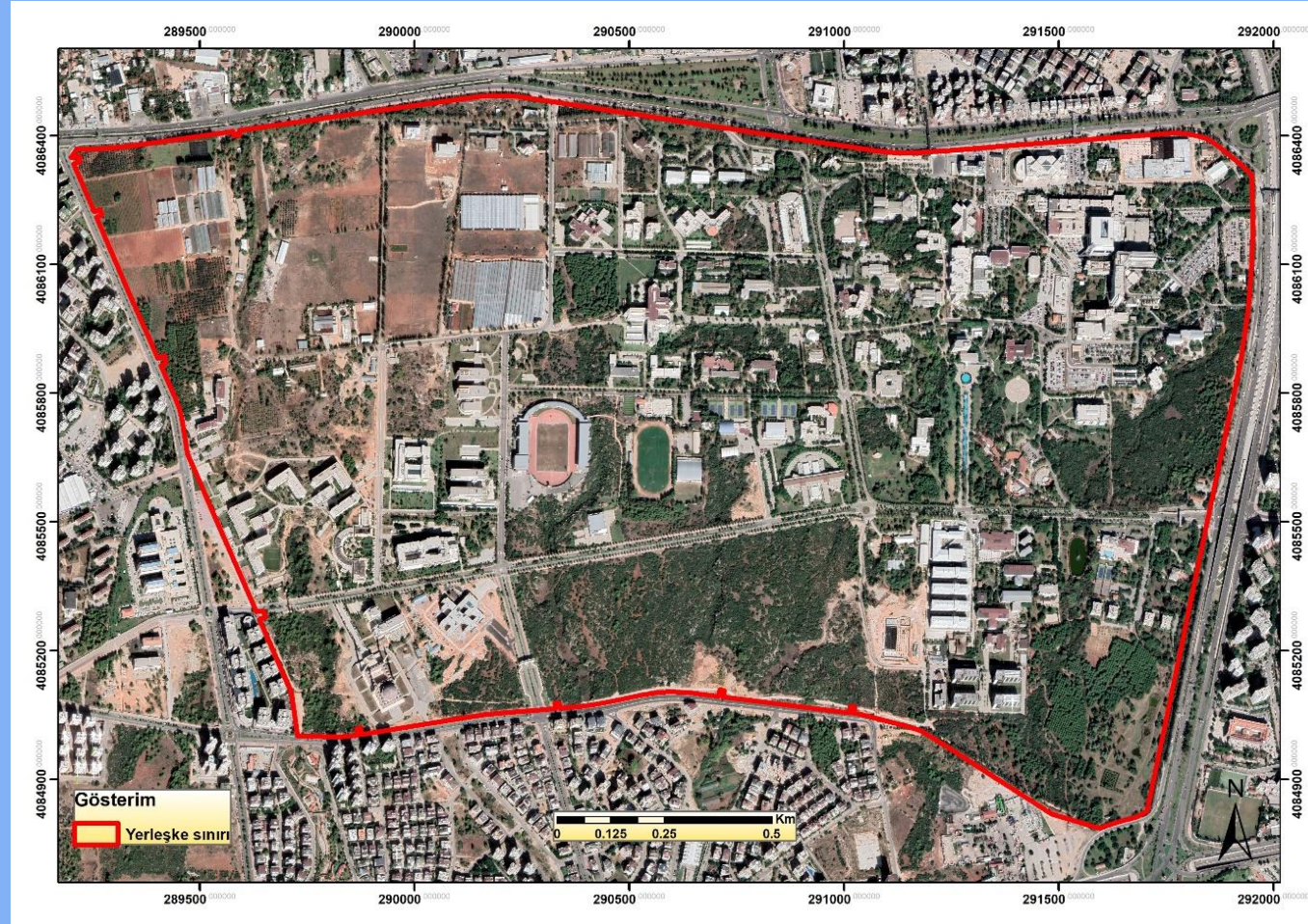
**HELD AT AKDENİZ UNIVERSITY  
DEPARTMENT OF GEOLOGICAL ENGINEERING**



NECLIME

# 12<sup>th</sup> NECLIME WORKSHOP

HELD AT AKDENİZ UNIVERSITY  
DEPARTMENT OF GEOLOGICAL ENGINEERING





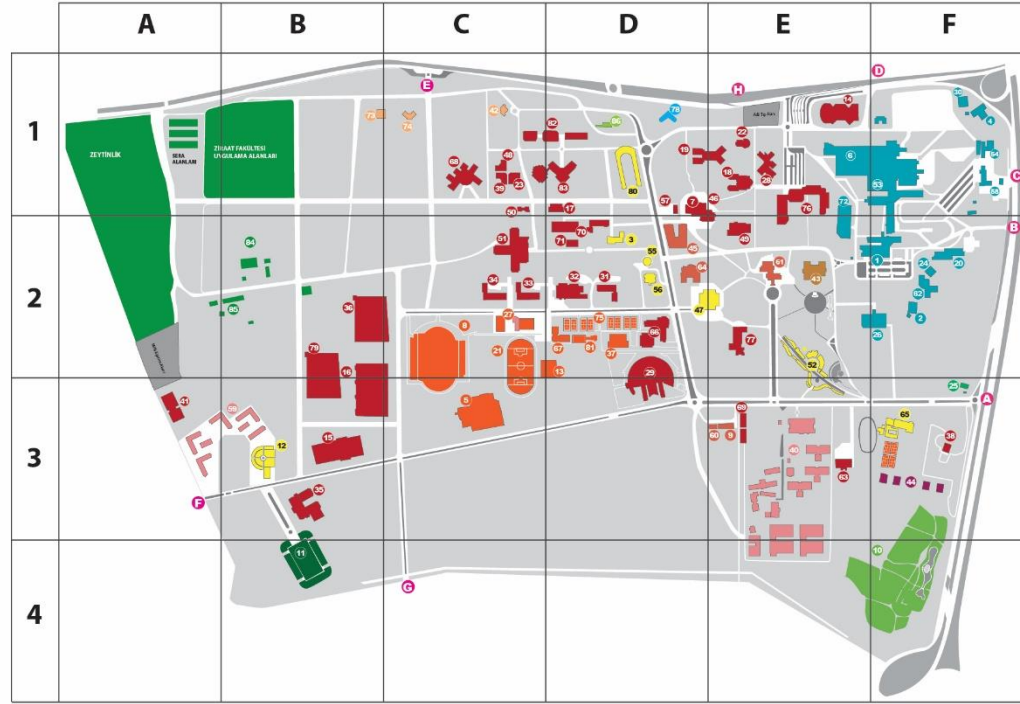
NECLIME

# 12<sup>th</sup> NECLIME WORKSHOP

HELD AT AKDENİZ UNIVERSITY  
DEPARTMENT OF GEOLOGICAL ENGINEERING



## AKDENİZ ÜNİVERSİTESİ KAMPÜS ALANI



1	ACIL SERVİS	E2-F2
2	AÇIK HEYKEL ATÖLYESİ ALANI	F2
3	AKDENİZ RESTAURANT	D2
4	AMATEM BİNASI	F1
5	ANİLEME SALONU	C3
6	ARASTIRMA UYGULAMA HASTANESİ	E-H1
7	ATATÜRK KONFERANS SALONU	D1-D2-E1-E2
8	ATILIM PRATİK VE TEORİK	C2-C3
9	BANKA ONYEM SUBE MÜDÜRLÜĞÜ	E3
10	BOTANİK BAHÇE	E4-F3-F4
11	CAMİ	B3-B4
12	CEYHAN	B3
13	ÇOK AMAÇLI SPOR SALONU	C2-D2
14	İŞ HESAPLARI FAKÜLTESİ	E1
15	EDEBİYAT FAKÜLTESİ	B3
16	EĞİTİM FAKÜLTESİ	B2-B3-C2-C3
17	FARKLI BİRİM HİNDİSİ TEKNOLOJİ	E1
18	FEN FAKÜLTESİ 2.BLOK	E1
19	FEN FAKÜLTESİ 2.BLOK	D1-E1
20	FİZİK TEDAVİ MERKEZİ	F2
21	FUTBOL SAHA	C2-C3
22	GERONTOLOJİ	E1
23	GÖRMEK İÇİN BİNASI	C1
24	GÜNÜBÜRLÜK PSİKIYATRİ MERKEZİ	F2
25	GÜVENLİK MERKEZİ	F3
26	GÜZEL SANATLAR FAKÜLTESİ	E2-E2
27	HALLİ SAHA	C2
28	HİMIK FAKÜLTESİ	E1
29	HUKUK FAKÜLTESİ	D2-D3
30	İŞİ MERKEZİ	F1
31	İİB FAKÜLTESİ A BLOK	D2
32	İİB FAKÜLTESİ B BLOK	D2
33	İİB FAKÜLTESİ C BLOK	C2
34	İİB FAKÜLTESİ D BLOK	C2
35	İLAHİYAT FAKÜLTESİ	B3
36	İLETİŞİM FAKÜLTESİ	B2-C2
37	KARALI SPOR SALONU	D2
38	KONSERVATUAR	F3
39	KÖK HÜCRE ARAŞTIRMA MERKEZİ	C1
40	KİREZİ VE YURTULAR KURUMU	E3-E4
41	KİREZ	A3
42	KULÜÇKA MERKEZİ	C1
43	KÜTÜPHANE	E2
44	LİMANLAR	F3
45	MATBAHA, İKİÇERLİK HİZMET BİRİMLERİ VE İNSTITÜLER	D2
46	MERKEZİ DERSLİK	D2-E1-E2
47	MERKEZİ KAFETERYA	D2-E2
48	MERKEZİ LABORATUVAR	C1
49	MİMARLIK FAKÜLTESİ	E2
50	MÜHENDİSLİK FAK. LABORATUVARI	C1
51	MÜHENDİSLİK FAKÜLTESİ	C2
52	OLBİA ÇARŞISI	E2-E3
53	ONKOLOJİ HASTANESİ	F1
54	ORGAN NAKLİ BİNASI	F1
55	ÖĞRENCİ CADIRI	D2
56	ÖĞRENCİ LOKALI	D2
57	ÖĞRENCİ TOPLULUKLARI MERKEZİ	D1
58	ÖYÜN	F1
59	ÖZEL ÖĞRENCİ YURT ALANI	A3-B3
60	PEYZAJ SUBE MÜDÜRLÜĞÜ	E3
61	REKTÖRLÜK	E2
62	RUM SAĞLIK TEŞHİS VE TEDAVİ MERKEZİ	F2
63	SAGLIK HİZMETLERİ MYO	E3
64	SAGLIK ÖLÇÜM VE SPOR DARESİ BAŞKANLIĞI	D2
65	SOYUN TEŞİS	F3
66	SPOR BİLİMLERİ FAKÜLTESİ	D2
67	SPOR TEŞİSİ VE İZLENİ MÜDÜRLÜĞÜ	D2
68	SULU BİLİMLER FAKÜLTESİ	C1
69	TEKNİK BİL. MYO MODÜLYA DEKÜZYON MERKEZİ	E3
70	TEKNİK BİLİMLER MYO	D2
71	TEKNİK BİLİMLER MYO EK DERSLİK	D2
72	TEKNİK MERKEZ	E1-E2
73	TEKNİK 1. BLOK	B4-D1
74	TEKNİK 2. BLOK	C1
75	TENSİS KORTLARI	D2
76	TIP FAKÜLTESİ DİKANLIĞI	E1-E2
77	TURİZM FAKÜLTESİ	E2
78	TÜRKİYE GÖZLEM Vİ	D1
79	YAKARCI DÜZLEM YAKARCIKULU	B2-B3
80	YAKUT YAŞAM ALANI	D1
81	YAZME HAVUZU	D2
82	ZİRAAT FAKÜLTESİ 1-2-3 BLOKLAR	C1-D1
83	ZİRAAT FAKÜLTESİ 4.BLOK	C1-D1
84	ZİRAAT FAKÜLTESİ HAYVAN BAHÇESİ	B2
85	ZİRAAT FAKÜLTESİ KÜTÜPHANE	B2
86	ZİRAAT KANTİN	D1



A-YAYA GİRİŞ KAPISI  
B-HASTANE (Acil) GİRİŞ KAPISI 1  
C-HASTANE GİRİŞ KAPISI 2

D-KUZEY ÇIKIŞ KAPISI (Adil Tıp Yanı Yolu)  
E-KUZEY KAPISI (Teknokent Yolu)  
F-BATI KAPISI (Uinalı Yolu)

G-GÜNEY KAPISI  
H-KUZEY GİRİŞ KAPISI



# 12<sup>th</sup> NECLIME WORKSHOP

HELD AT AKDENİZ UNIVERSITY  
DEPARTMENT OF GEOLOGICAL ENGINEERING





## PROGRAM of 12<sup>th</sup> NECLIME workshop

18 OCTOBER, 2023 (Wednesday), Hall of Geological Engineering

9.00-10.00	Registration of the participants
10.00-10.10	Opening of the workshops
10.10-10.30	<b>Introductory lectures– Erdal Koşun, Angela A. Bruch, Dimiter Ivanov</b>
10.30-10.50	<b>Angela A. Bruch, Selina Mahler, Irina Shatilova</b> <i>Neogene long-term trends in climate in Western Georgia and its impact on pollen diversity</i>
10.50-11.10	<b>Detelina Belkinova, Dimiter Ivanov</b> <i>Ecological Implication of Non-Pollen Palynomorphs – an Example from the Late Miocene Belibreg Coal Basin (Bulgaria)</i>
11.10-11.30	<b>Sariye Duygu Durak, Mehmet Serkan Akkiraz, Nazie Özgen Erdem, Atike Nazik</b> <i>Eocene palaeoecology of the Mengen (Bolu) Basin, comparison of other coeval deposits of Turkey</i>
11.30-11.50	<b>COFFEE BREAK</b>
11.50-12.10	<b>Nurdan Yavuz</b> <i>Non-Pollen Palynomorphs as Potential Palaeoenvironmental Indicators in Quaternary sediments from Anatolia</i>
12.10-12.30	<b>Lisa Schiersch, Angela A. Bruch</b> <i>First approach to quantifying the relationship between the regional vegetation and the pollen record of Armenia</i>
12.30-13.20	<b>LUNCH</b>
13.20-13.40	<b>Nikita Lavrenov, Ekaterina Ershova, Valery Pimenov</b> <i>Late Holocene landscape dynamics and human impact on it in Smolensk Region (Western Russia)</i>
13.40-14.00	<b>Narine Hayrapetyan, Elen Hakobyan, Eliso Kavadze, Edoardo Martinetto, Ivan Gabrielyan, Angela A. Bruch</b> <i>Middle to late Holocene Lake level changes of Lake Sevan (Armenia): Evidence from pollen and NPP analysis of the Tsovinar-1 peat section</i>
14.00-14.20	<b>Sarah Gonçalves Duarte, Francisko José da Silva, Mitsuru Arai, Harinam Joshi, Haytham El Atfy</b> <i>Paleoclimatic, paleoenvironmental and paleoecological discussions based on the records of spores of the Anemiaceae family and other associated palynomorphs from upper Jurassic up to Miocene</i>
14.20-14.40	<b>COFFEE BREAK</b>
14.40-18.00	Sightseeing of Inner Castle (kaleiçi)
18.00-21.00	<b>DINNER</b> Inner Castle (kaleiçi)



NECLIME

## PROGRAM of 12<sup>th</sup> NECLIME workshop

19 OCTOBER, 2023 (Thursday), Hall of the Geological Engineering

9.00-9.20	<b>Eliso Kvavadze</b> <i>New opportunities for joint research of non-pollen palynomorphs (NPP) and pollen for the reconstruction of the environment, living conditions and activities of ancient human</i>
9.20-9.40	<b>Sarah Gonçaves Duarte, Mitsuru Arai</b> <i>Sclereids and trichomes (new categories of palynomorphs sensu lato): Comparative studies between the fossils and of the extant/living plants with their preliminary applicabilities.</i>
9.40-10.00	<b>Valerii Pimenov, Ekaterina Ershova</b> <i>Local vegetation of the Kamchatka river valley during The Holocene and Late Pleistocene: reconstruction based on palynological and tephrochronological data</i>
10.00-10.40	<b>COFFEE BREAK</b>
10.40-12.00	<b>Workshops at the microscope (the opportunity to observe the participants samples)- Department of Biology</b>
12.00-13.00	<b>LUNCH</b>
13.00-15.00	<b>Discussion, summary and plans for the future, closing of the workshops</b>
15.00-18.00	<b>Sightseeing of Lower Düden Waterfalls</b>

